

TECHNION



**TDC130**  
3.2-inch CAN display

**From analog to digital  
instrumentation**

*Developed and  
Manufactured  
in Finland*



## Graphical user interface changes customer experience

**TDC130** is a compact CAN-based display module finally making the replacement of analog instrumentation feasible. In order for high-quality graphical elements to be displayed on screen, we selected a display that offers you a much better contrast and user experience than traditional passive matrix displays. We designed the **TDC130** display so that adding it to existing control systems would be cost-effective and simple, making it a suitable option even for cost-critical machines. Modernizing your machine with the **TDC130** display is a cost-saving solution that will provide you with more informative and elegant data.

### Maximum reliability in a compact package

The compact and slim **TDC130** display has been designed to meet the high quality standards set by Technion. It comes with an IP65 enclosure and can be used inside the driver's cabin as well as in outdoor applications, such as in aerial platforms. The isolated CAN design offers maximum reliability and the product can freely be used in locations where grounding may be weak.

### Fast time-to-market

Technion has released a simple user interface configuration tool called TeGUI to speed up your development phase. TeGUI makes organizing your information on the screen easy and efficient, and you will be able to design your graphical user interface in no time at all. Using the tool does not require a license. In addition to the display, the package includes two bicolor LEDs, four buttons and a buzzer that further improve the functionality of the user interface.

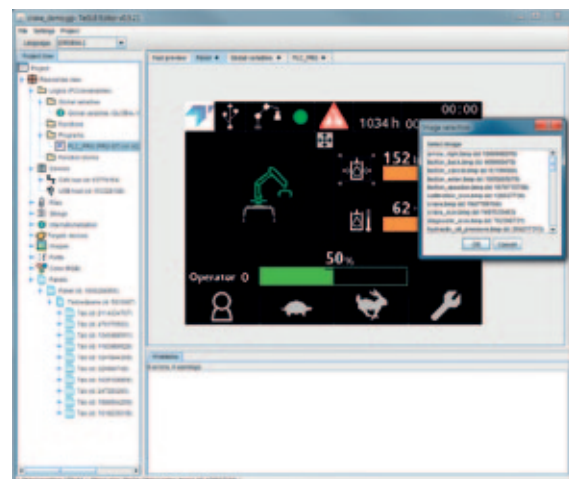
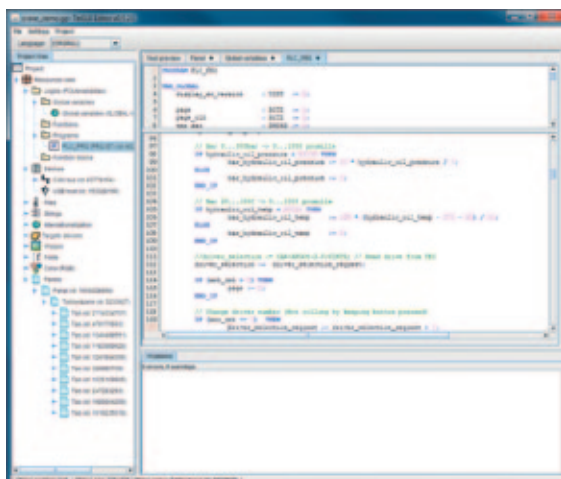


## Product Specification

CPU	32-bit architecture, 125 DMIPS performance
Memory	FLASH 512kB Data FLASH 16MB RAM 64kB
Supply voltage range	9V - 32V (operational overvoltage 36V)
Supply current, logic	0.1A
Housing	Panelmount stainless steel and polycarbonate / 118mm x 91mm x 27mm (W x L x H)
Temperature range, operating	-25...+60°C
Temperature range, storage	-40...+75°C
Protection	IP67 frontside, IP65/IP30 backside
Connectors	M12 A-coded (2pcs) M12 mini-USB (1pcs) Plug-In connector (1pcs) (order option)
Display	3.2" QVGA TFT, contrast ratio 500, viewing angle 55°
Keyboard	4-button membrane keypad
Other	Two bi-color LEDs, real time clock with back-up capacitor, buzzer
CAN x 1pcs	ISO 11898-2
CAN x 1pcs	ISO 11898-2, with galvanic isolation
USB	USB 2.0 Full Speed, 0.1A
Electrical requirements	ISO 16750-2
Mechanical requirements	ISO 16750-3
Climate requirements	ISO 16750-4
Construction machinery - EMC	EN 13309:2010
Agricultural and forestry machinery - EMC	EN ISO 14982:2009~
Earth-moving machinery - EMC	ISO 13766:2006~
Application development environment	TeGUI editor



## Image handling by TeGUI



## Optional Feature Matrix

FEATURE / PRODUCT	TDC130 BASIC	TDC130 FULL
3,2" QVGA TFT display	✓	✓
4-button membrane keypad	✓	✓
Two bi-color indicator LEDs	✓	✓
CAN 2.0B	✓	✓
CAN 2.0B, Electrically isolated		✓
USB 2.0, Full Speed	✓	✓
Buzzer		✓
RTC	✓	✓
Data FLASH 16MB	✓	✓

## Contact Information

### Technion Ltd.

Linkkikatu 15  
21100 Naantali  
Finland

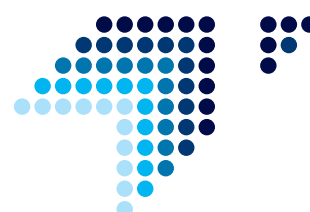
tel. +358 (0)40 191 1000  
fax +358 (0)2 438 9907  
www.technion.fi  
firstname.lastname@technion.fi

### Technion Electronics (Suzhou) Co., Ltd.

Ascendas-Xinsu Industrial Square,  
Block B #05-11/12,  
No.5 Xing Han Street,  
215021 Suzhou, P.R. China

tel. +86 (0) 512 8816 5908  
fax +86 (0) 512 8816 5906  
info.china@technion.fi

### TECHNION



## Order Options

TDC130-001	TDC130 FULL, plug-in connector~
TDC130-004	TDC130 BASIC, M12 connectors~

## Technion Partner